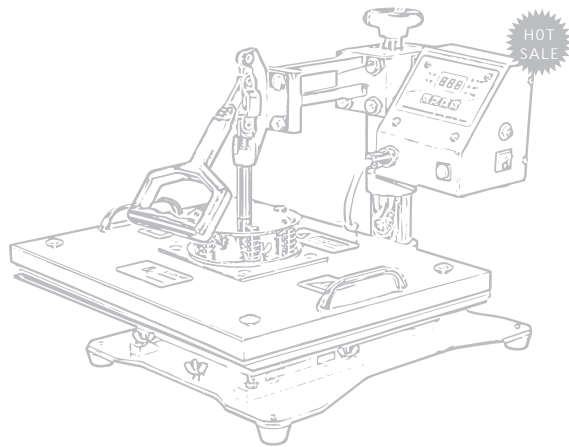
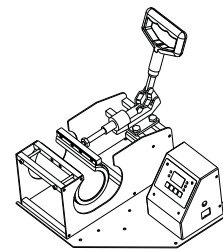




Manual of  
**DIGITAL MUG  
PRESS**  
**JTrans<sup>®</sup> SERIES**



**Combo Press Machine (8-in-1)**



Model No: JTSB03



Model No: JTSB05V



Model No: JTSB01B

This Manual is applicable for mug press serial products



Model No:JTSB03

Model No:JTSB05V

Model No:JTSB07

Model No:JTSB01B

### ■ Structure:

1	Pressure Handle	7	Plus
2	Pressure Adjustment Screw	8	°C/°F
3	Silicon Mug Wrap	9	Fuse
4	Digital Display	10	Power ON-OFF
5	Minus	11	Execute key
6	Mode Setting	12	Accessory Interface Port

### ■ Multifunctional Mug Press(4-in-1)

Model No: JTSB05V

Gross Weight: 11KG

Packing: Carton Packing

Ctn Measurement: 380mm×360mm ×330mm

Color: Black and blue

### ■ Heater sizes

φ 7.5- φ 9.0cm fits for 11oz/15oz coated mugs/beer stein mugs.,and etc

φ 5- φ 7.5cm fits for mini mugs 5oz/6oz /water bottles

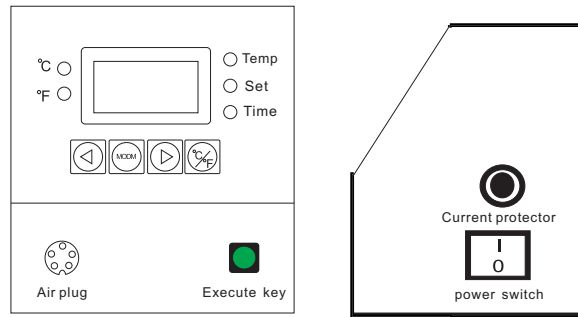
φ 8.8\*H14.9cm fits for 17 oz Latte Mug (cone-shaped)

φ 9\*H9.8cm fits for 12 oz Latte Mug (cone-shaped)

### ■ Description:

The All-In-One Mug Press is one of the most popular heat press machines. With digital and humanized functions, this new machine is a perfect machine for printing mugs. With the additional four mug heaters, including heaters for all round mugs from 6oz to 22oz, also the 12oz and 17oz latte shape mugs, you could make different sizes of mugs as you like. By using this machine, you could make personalized cone-shaped mug and normal straight mug at the same time, Just by replacing different mug heater easily! It provides a new choice for you. Colorful mugs with your own pictures can meet different needs of different occasions. It is not necessary to worry about changing the heaters. It is very easy to change by screwing off the screws, taking it off, installing another on, and tightening the screws. It is done!

# Control Panel Operation



## ■ Indicator

The red indicator represents °C, °F, TEMP, SET and TIME.

1. °C: when the indicator works, The display reads the temperature in °C;
2. °F: when the indicator works, The display reads the temperature in °F;
3. When the TEMP indicator works, Temperature can be set.
4. When the TIME indicator works, Time can be set.
5. When the SET indicator works, functions of the machine can be set.

In all, 5 buttons are designed on the controlling board, in which

1. the green button is for working and stop;
2. “▽” is for deduction;
3. “MODE” is for set;
4. “△” is for increase;
5. The “°C/°F” button is for the temperature conversion between the two modes.

## ■ II Manipulation

1. Set the function button at first

**Step One:** Set the pre-heat temperature

Press the “MODE” button once, triggering the “SET” indicator, and the display says the pre-heat temperature. Adjust the temperature through the “▽” (decrease) and “△” (increase).

Note: the pre-heat temperature shall be lower than the working temperature.

**Step Two:** Set the working temperature

Upon the finish of Step One, press the “MODE” button again, then the “TEMP” and “SET” indicator work, the display reads the working temperature. Adjust the working temperature via the “▽” and “△”, till it meets the requirement.

**Step Three:** Set the working time

Upon the finish of Step Two, press the “MODE” button again, the “TEMP” indicator is black out and the “TIME” and “SET” will on, and the display reads as keeping the working time. Adjust the working temperature via the “▽” and “△” (time in seconds)

**Step Four:** Complete the setting

Press the “°C/°F” button after Step Three, the temperature display will change with the changing mode, and the corresponding °C/°F indicator will on.

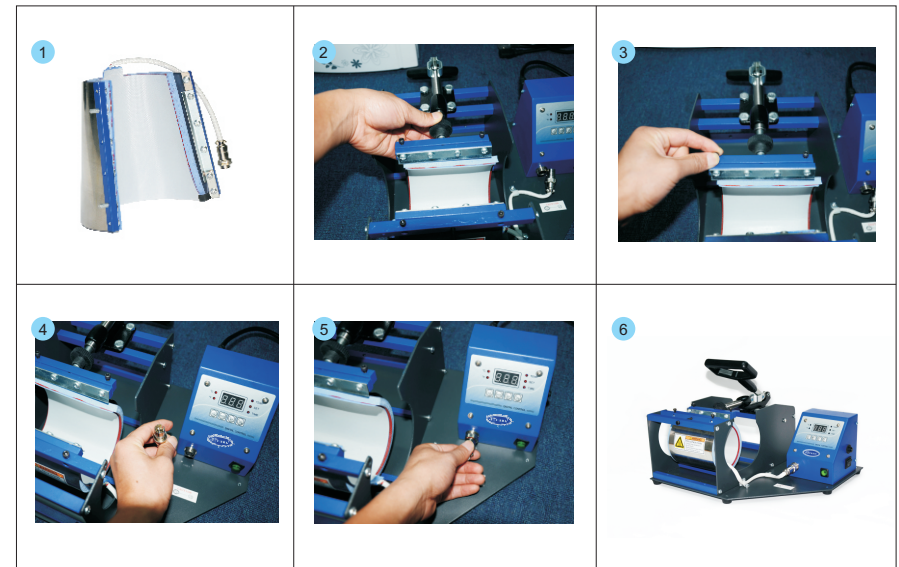
Press the “MODE” button again, the “TEMP”, “SET” and “TIME” will be out at the same time. The setting to the machine is completed, and the temperature begins increase or decrease automatically.

2. Work and stop

Press the work button and the machine starts working. “SET” indicator works, the machine starts heating, and the display reads the current temperature. When the temperature reaches the set figure, “TIME” indicator works and is kept in the countdown period when the temperature maintains. The display reads the preset warm-keeping time. It is counted down and the indicator will be out in a buzz. Then, the display reads the set temperature, but the machine stops keeping warm. Press the execute button, the buzz ends. Press the button repeatedly, the machine will be in the recycle of work and stop.

# Instruction of Accessories Replace

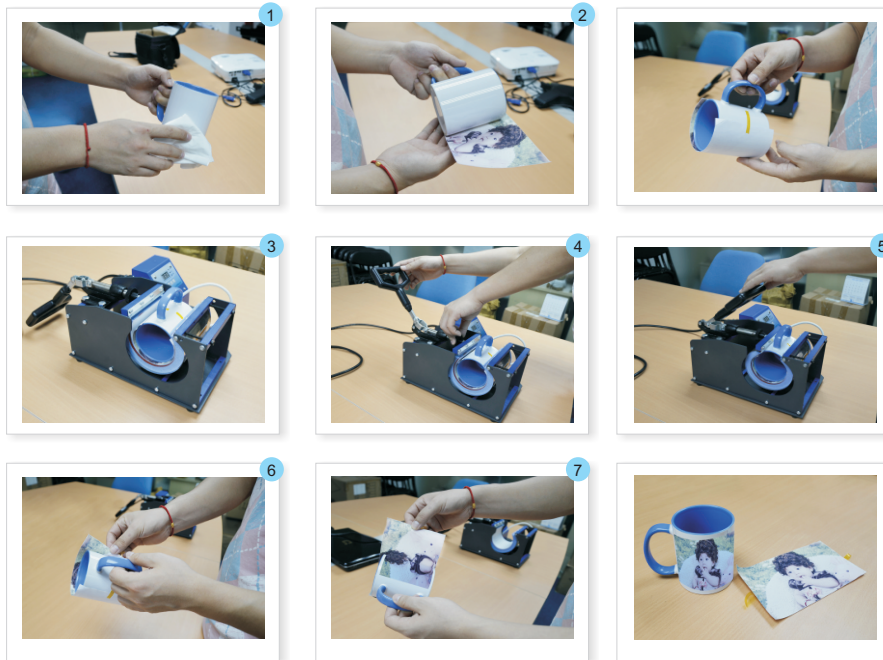
The replace process is shown as follows.  
Be cautious when replacing.



Matchable mats and corresponding mugs of this machine(JTSB03)



# Operation Control Panel



1. Clean the mug surface with tissue paper; Cut the image as per your design, printing size (L≤20cm H≤9cm) Use dryer to dry the image if the photo paper is just printed with ink or you can lay the photo paper to dry itself naturally.
2. Wrap the mug with the cut image, Make the image in the central and make it symmetrical both sides; Stick the paper with thermal tape.
3. put the mug in the center of the mug press machine horizontally , with the mug handle upwards (also you can put it not in center as you like);
4. Adjust the pressure screw for printing mugs, not too tight, or too lax;
5. Turn on the current, turn on the switch;
6. Then you can see a photo mug is well printed;
7. If you want to make another one, Just turn on the mug machine, needn't adjust the time and temperature again, but adjust the pressure, make sure it is the same as the first one. Then press the Execute key, the Setting Indicator Light will turn red, The machine starts to print.

### ■ Special notes:

- 1 . Please don't work without placing any mugs in the machine.
- 2 . Please don't operate the machine over time. Turn off for several minutes cooling after an hour of working.

# Parameters

Item	Initial (F)	Highest (F)	Time (S)	Note
Mug	230 325	330 330	40 100	—Moderate/ proper pressure —The temperature not too high.
Aluminum	230 280	315 315	20 100	—Moderate/ proper pressure —The temperature not too high.
Glass Mug	230 325	330 330	40 100	—The temperature not too high.

1. Above time&temperature parameters are just for equipment made by our factory. It may be different from that of others.
2. The temperature is in “Fahrenheit”
3. Above parameters are only our suggestions from our own experience. You can try out the best from your own operation.

### ■ FAQs :

- A. The color is a little light: the temperature is too low, or the pressure is unbalanced, or the time is too short.
- B. The picture is vague: Printing time is long time, causing spread of ink..
- C. The printing cover looks not brilliant: the pressure is too heavy or the temperature is too high.
- D. The print is partially vague: the heat of pressed area is unbalanced.
- E. The print has scar: the pressing time of is too long.
- F. The print in different color: The pressure is unbalanced or the cover printing materials is not balanced.
- G. Paper is found sticky: the temperature is too high or the cover of printing materials is not so good.

### ■ NOTE :

1. Do not heat the machine without mug in the heaters in case of burnout; Do not touch the heating elements directly without any protection in case of any hurt; If the machine works more than 1.5hours, it is better to close the machine for 20minutes break.
2. Trouble-shootings
3. We highly recommend to set the highest temperature below 420 Fahrenheit or 200Celsius degree to prolong the duration of the machine.



